



## 2025 SCHOLARSHIPS STATS



**20** individual scholarships were awarded



Just over **\$78,000** was distributed in scholarship awards



The average scholarship per student was **\$4,000**



## MAJOR SPONSORS

*Thank you to our sponsors for their continued support and commitment.*



**#MoreMoneyforMoreKids**



**2015-2025**  
**Celebrating 10 Years of Impact**

**BUILDING FUTURES FOR KIDS  
OF INJURED WORKERS**

**Since its founding in 2015,  
Kids' Chance of Florida  
has awarded  
105 scholarships  
totaling over \$453,000.**

## CONTACT US

[www.kidschancefl.org](http://www.kidschancefl.org)

[info@kidschancefl.org](mailto:info@kidschancefl.org)



# ABOUT US

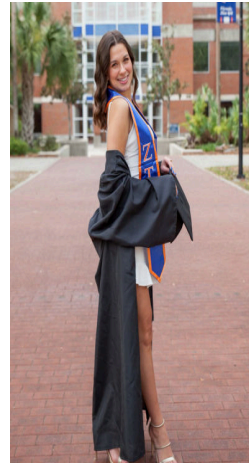
Kids' Chance of Florida, Inc. is a nonprofit 501(c)(3) tax-exempt organization founded in 2015 by professionals who have an affiliation with workers compensation in our state.

Kids' Chance of Florida is governed by an all-volunteer board, and raises funds for scholarships through donations from individuals, corporations, foundations, and other organizations active in workers compensation matters.



# OUR MISSION

The mission of Kids' Chance of Florida is to provide scholarship grants to educate children of Florida workers who have been killed or seriously injured in work-related accidents resulting in financial need at the college, university, or vocational level.



# ELIGIBILITY REQUIREMENTS

Any student between ages 16–25 whose parent(s) had an on-the-job death or serious injury associated with a FL Workers' Compensation or Longshore/Harbor Workers' Compensation claim, that resulted in a substantial decline in family income, not less than 12-months, may be eligible for a one time or subsequent year scholarship award if successfully meeting academic standards and guidelines outlined in the online application.

The number of scholarships awarded is dependent on available funds and may vary from year to year. Kids' Chance scholarship recipients must reapply each year.

# SCHOLARSHIP GIVING LEVELS



## SCHOLARSHIP PARTNER LEVEL

- Annual donation of \$10,000 or more
- Recognition at all Kids' Chance of Florida events
- Display of company logo and link on the KCFL homepage with recognition as a Partner
- Permission to display the Kids' Chance logo and link to our website on the company website

## PARTNER LEVEL

- \$20,000 four-year commitment (\$5,000 per year)
- Recognition at all Kids' Chance of Florida events
- Display of company logo and link on the KCFL homepage with recognition as a Partner
- Permission to display the Kids' Chance logo and link to our website on the company website

## ASSOCIATE LEVEL

- \$10,000 four-year commitment (\$2,500 per year)
- Recognition at all Kids' Chance of Florida events
- Display of company logo and link on KCFL donors and friends page with recognition as an Associate
- Permission to display the Kids' Chance logo and link to our website on the company website

## SUPPORTER LEVEL

- Annual donation of \$500 or more
- Recognition as a supporter on the KCFL website